

IOT TOOLBOX

Create an IoT chain quickly and easily

QUICK START GUIDE

Version 1.0.0

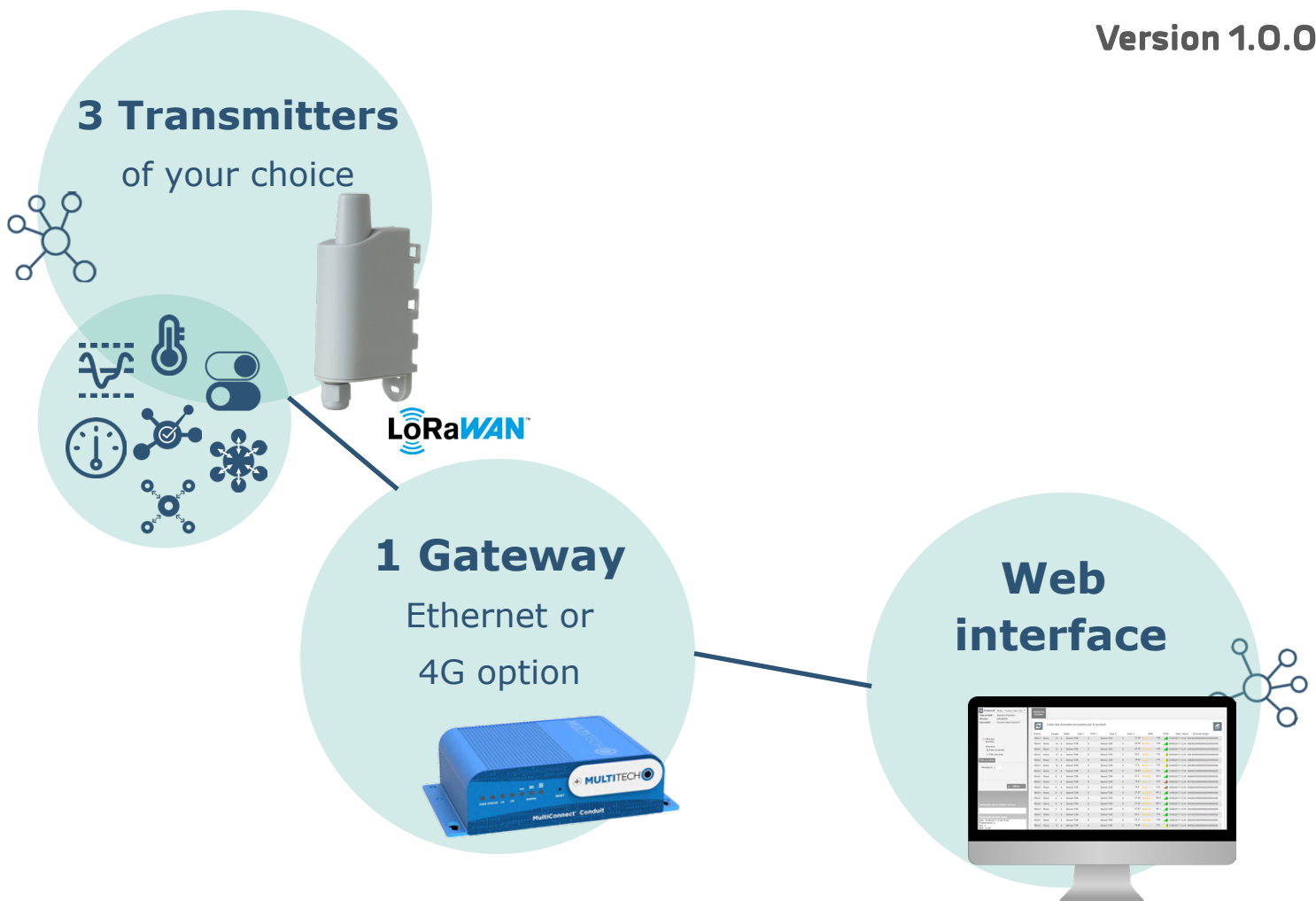


Table of contents

1.	INFORMATIONS	3
2.	4G Gateway Installation	4
3.	ETHERNET Gateway Installation	5
3.1.	Cables connexion	5
3.2.	Computer Network Settings	6
3.3.	Gateway Network Settings	8

EN

1. INFORMATIONS



To know what is your IoT Toolbox version, check the sticker on the side of the box, like display below:



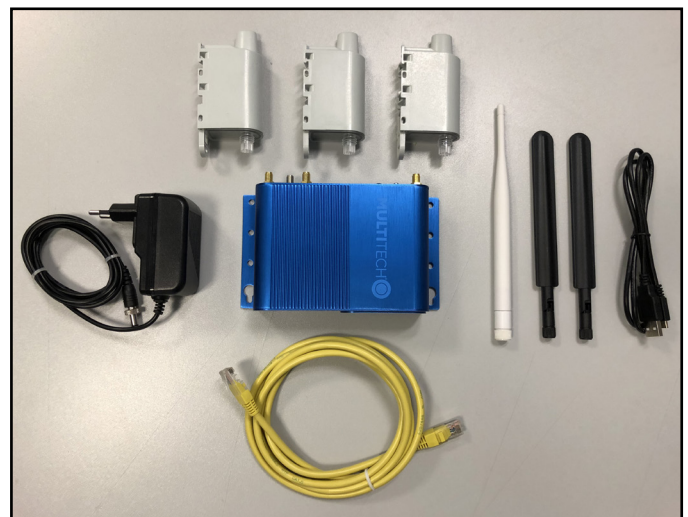
EN

Ethernet Toolbox version composition:

- 1 Multitech gateway
- 1 Antenna LoRa 868MHz (White)
- 1 Power supply adaptor
- 1 Ethernet cable (2m)
- 1 USB cable
- 3 Adeunis IoT devices

4G Toolbox version composition:

- 1 Multitech gateway
- 1 Antenna LoRa 868MHz (White)
- 1 Antenna GSM 4G (Black) + 1 spare
- 1 Power supply adaptor
- 1 Ethernet cable (2m)
- 1 USB cable
- 3 Adeunis IoT devices



Your IoT Toolbox is already fully set to retrieve data from Adeunis IoT devices. However, to send this data to an application server in order to monitor them from anywhere, the Toolbox needs to be connected on an Internet Network. Depending of your type of IoT Toolbox, you may need to connect the gateway to your company network.

**If you have an Ethernet IoT Toolbox version,
Jump directly to the page 5.**

2. 4G GATEWAY INSTALLATION

- 1) Connect the white antenna LoRa on the « RF » connector of the Multitech gateway.
- 2) Connect the black antenna GSM on the « CELL » connector of the Multitech gateway.
- 3) Connect the power supply adaptor on the Multitech gateway.
- 4) Supply the gateway by connecting the other extremity of the adaptor to an outlet.



Your 4G IoT Toolbox is now ready, you can proceed to the activation of adeunis® devices and monitor your data on your WebApp.

NOTE: Do not continue reading the document if you have a 4G IOT TOOLBOX version.

3. ETHERNET GATEWAY INSTALLATION

3.1. Cables connexion

- 1) Connect the white antenna LoRa on the « RF » connector of the Multitech gateway.
- 2) Connect the Ethernet cable on « E-NET » port of the Multitech gateway.
- 3) Connect the power supply adaptor on the Multitech gateway.
- 4) Supply the gateway by connecting the other extremity of the adaptor to an outlet.



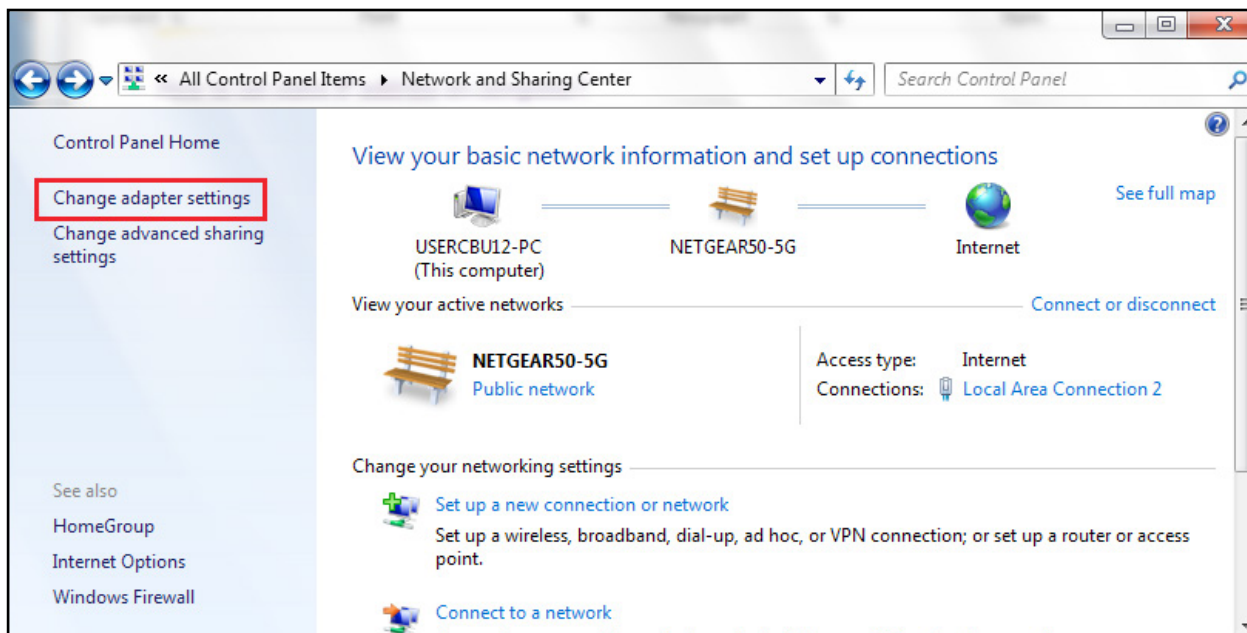
- 5) Connect the other extremity of the Ethernet cable to your PC.



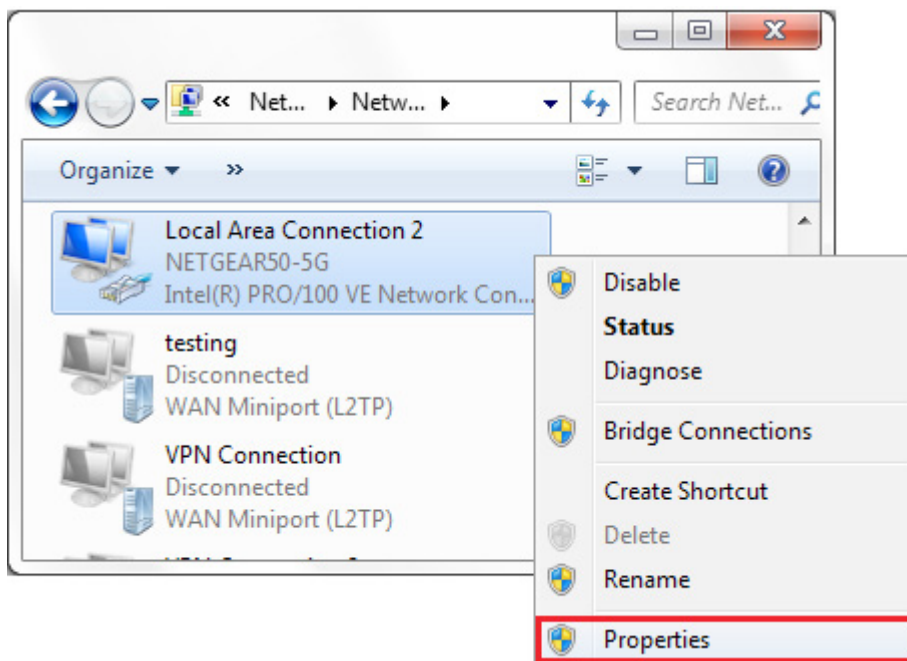
3.2. Computer Network Settings

1) On your computer, click on:
 « **Start Menu > Control Panel > Network and Sharing Center** ».
 (For Windows 8 and higher, search for and open Control Panel and select Network And Internet).

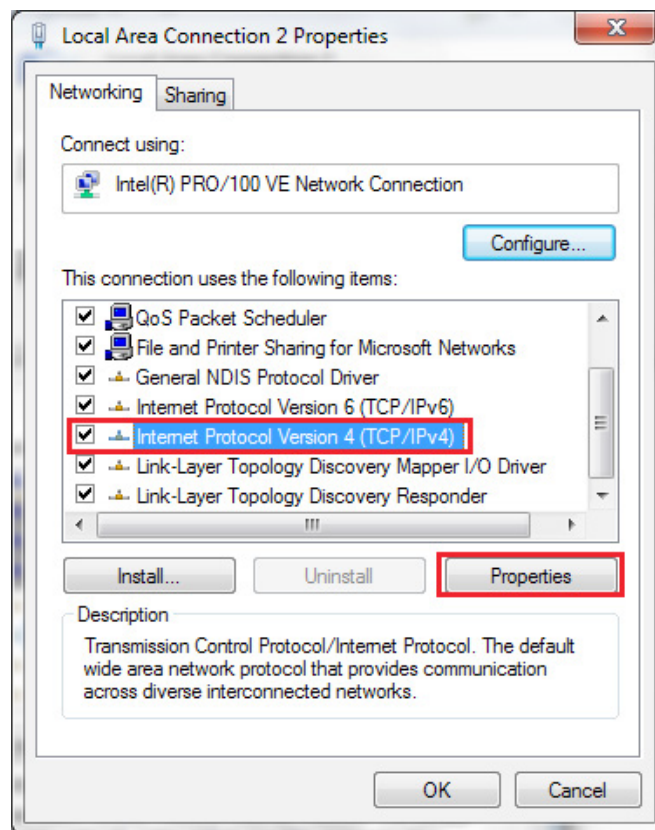
2) Click « **Change adapter settings** ».



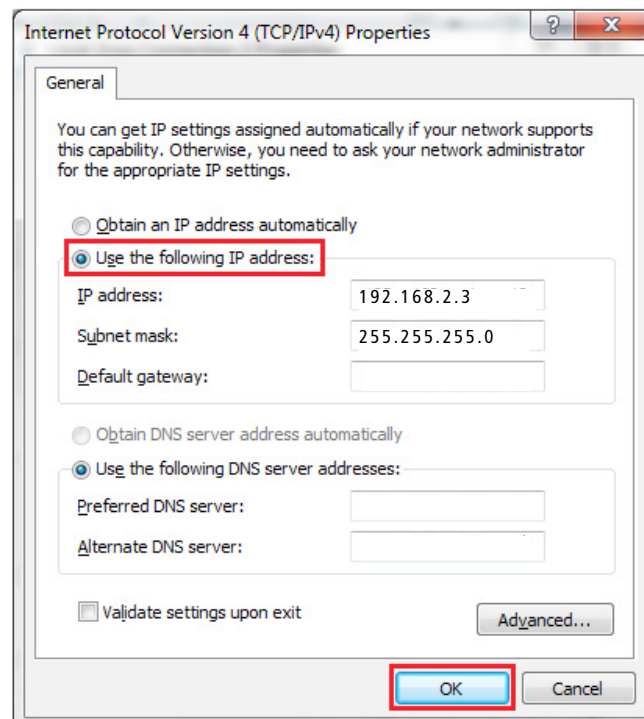
3) Right-click on « **Local Area Connection** » and click on « **Properties** ».



- 4) Select « **Internet Protocol Version 4** » (TCP/IPv4) and click on « **Properties** ».



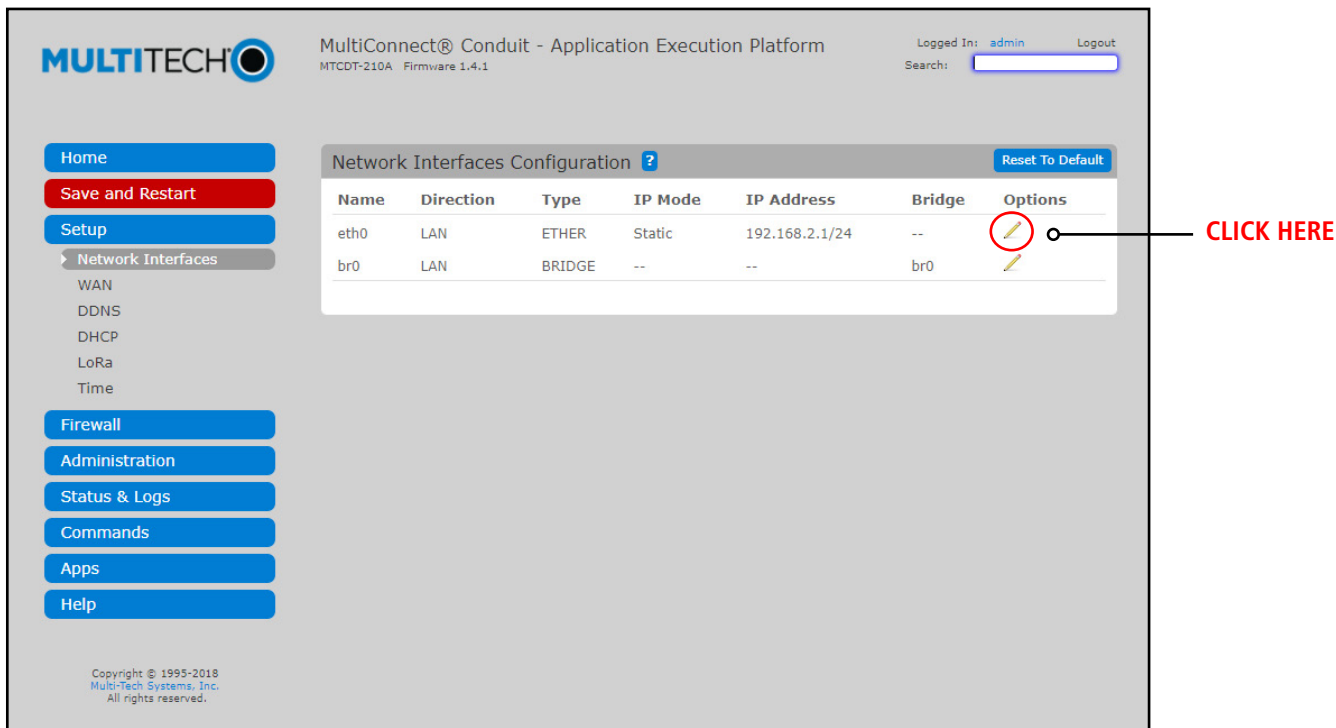
- 5) Select « **Use the following IP address** » and enter the IP address **192.168.2.3** and the Subnet Mask **255.255.255.0**. Then click **OK** and close the Local Area Connection properties window.



3.3. Gateway Network Settings

You are now able to communicate with the Gateway. It is necessary to connect your gateway to your company network in order to have a link between the LoRa Network and Internet. To do so, you need to ask to your network administrator an IP address, the network mask and the company gateway that you will address to the Multitech gateway.



- 1) Open your internet browser and type the address **192.168.2.1**.
- 2) Log in with the login « **admin** » and the password « **admin** ».
- 3) Click on « **Setup** » and then « **Network interfaces** ».



MultiConnect® Conduit - Application Execution Platform
 MTCOT-210A Firmware 1.4.1

Logged In: admin Logout
 Search:

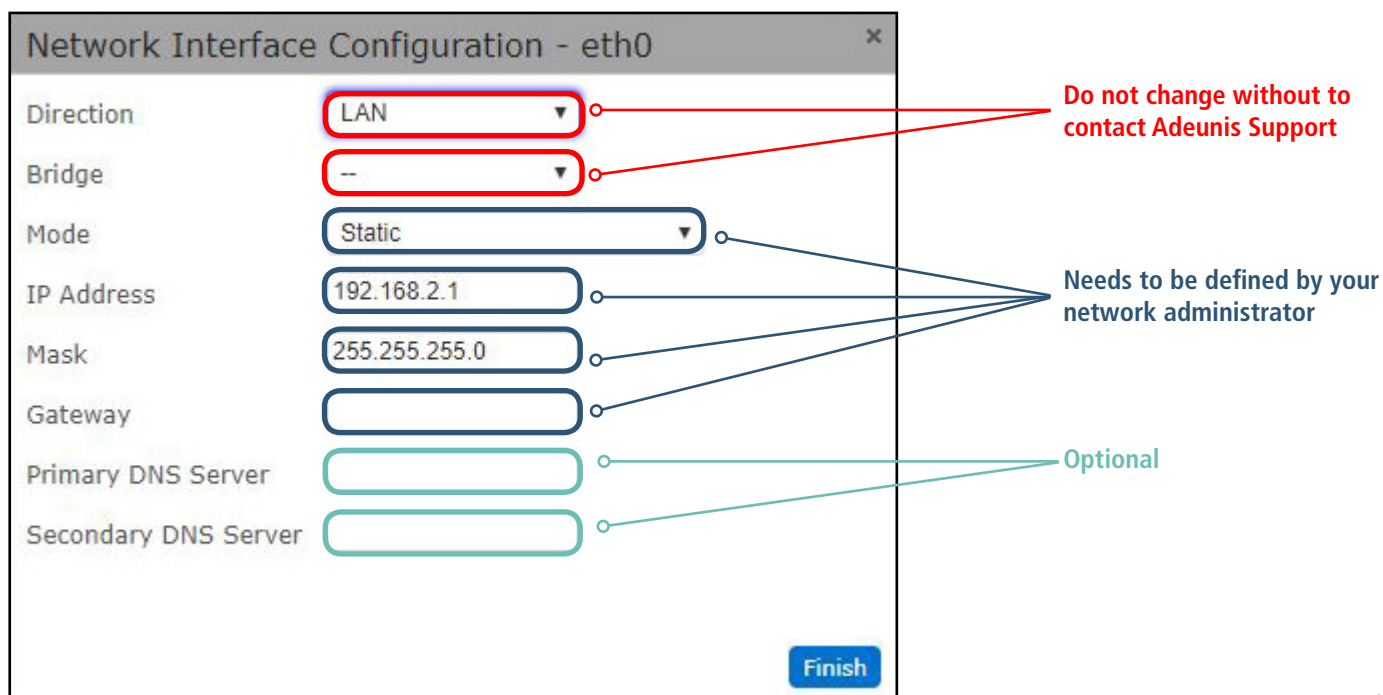
Home
 Save and Restart
 Setup
 Network Interfaces
 WAN
 DDNS
 DHCP
 LoRa
 Time
 Firewall
 Administration
 Status & Logs
 Commands
 Apps
 Help

Name	Direction	Type	IP Mode	IP Address	Bridge	Options
eth0	LAN	ETHER	Static	192.168.2.1/24	--	
br0	LAN	BRIDGE	--	--	br0	

Reset To Default

Copyright © 1995-2018
 Multi-Tech Systems, Inc.
 All rights reserved.

- 4) Click on the pencil at the right of the page to edit the **interface eth0**.
- 5) Define your Network Interface as described by your **network administrator**.



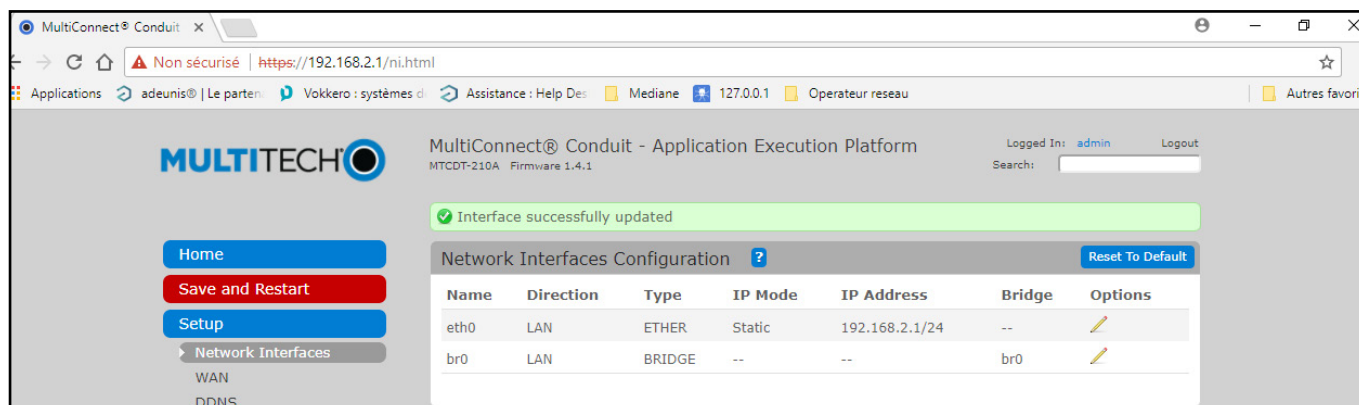
Network Interface Configuration - eth0

Direction: LAN
 Bridge: --
 Mode: Static
 IP Address: 192.168.2.1
 Mask: 255.255.255.0
 Gateway:
 Primary DNS Server:
 Secondary DNS Server:
 Finish

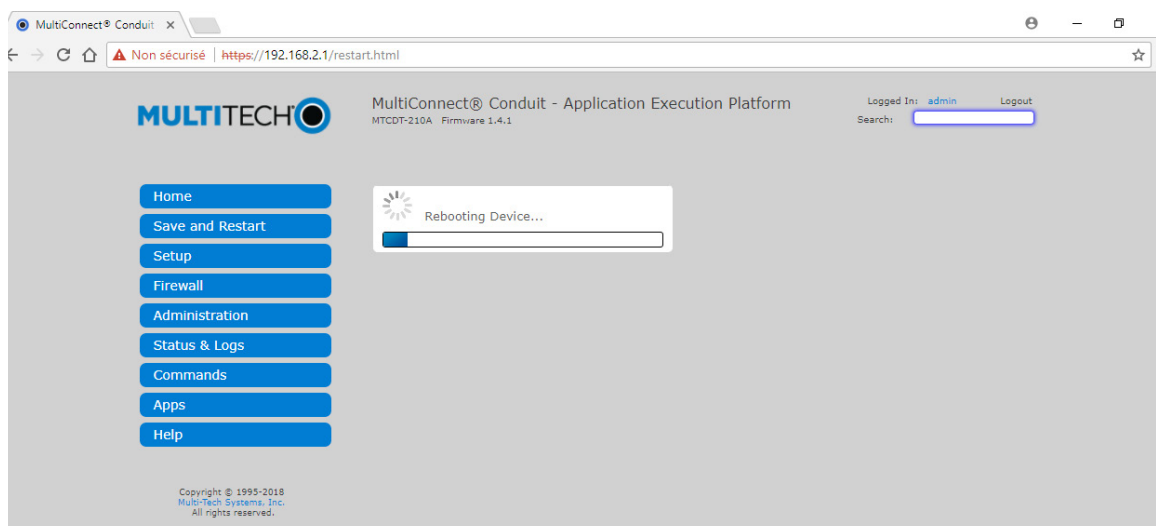
Do not change without to contact Adeunis Support

Needs to be defined by your network administrator

Optional



- 6) Click on « **Save and Restart** » to save the new network interface settings.
 The Multitech Gateway is now rebooting and ready to be connected on the network of the company.



- 7) Once the gateway is rebooted, disconnect the Ethernet cable of gateway backpanel (E-NET) and connect the network cable of your company.

**Your Ethernet IoT Toolbox is now ready,
 you can proceed to the activation of Adeunis devices
 and monitor your data on your WebApp.**

Note : In case of difficulty during the start-up, don't ever press the « Reset » switch of the gateway. You would lose all the settings of this one.