

MODBUS

Query one or more Modbus slaves.



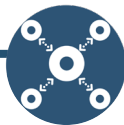
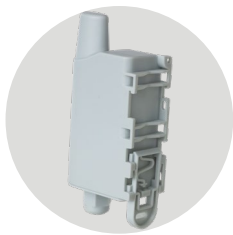
ALERT

- Provide feedback about faults and alerts from Modbus slaves



MEASURE

- Provide feedback about measuring data from Modbus slaves



FUNCTION

Serial interface

BENEFITS

- Modbus Master RS485/RS232
- Up to 10 slaves or 15 registers per slave
- Control and supply of power to the sensor
- Locally and remotely configurable



PRODUCT USES



Connecting weather stations equipped with many sensors.



Broadcast information on industrial automata.

TECHNICAL SPECIFICATIONS

- Periodic modes or event-based modes
 - 6-24V external power supply
 - Dimensions: 105 x 50 x 27 mm
 - Box: IP67 (IP68 on request)
- Integrated fastening system: DIN rail, tube, wall, flange
 - Configurable Life Screen
- Zone: Sigfox: RC1 / LoRaWAN: EU863-870 / WM-Bus: 868
- Operating temperature range: -20°C to + 75°C
 - Weight: 70g
 - Standards: Directive 2014/53/EU (RED)
- Product error alert, configuration error, low battery