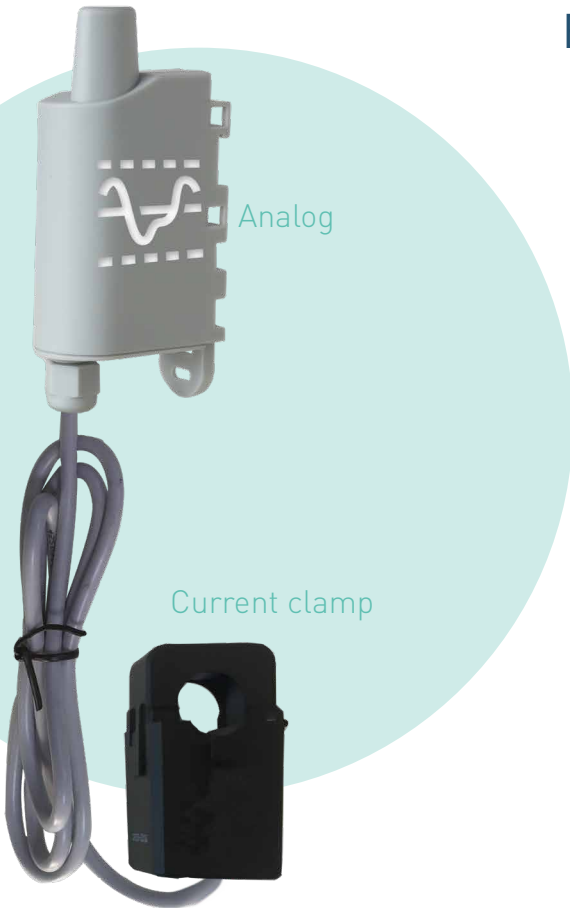


CURRENT SENSOR

Measuring power intensity

Existing versions: 50 A and 100 A



- Prevent malfunctions
- Warn in case of equipment failure



- Control energy production
- Monitor and analysing consumption



Additional features:

- Data transmission: every hour
- Error/fault management: product error warning, low battery



Monitoring the operation of equipment in order to anticipate malfunctions or know the time of use.



Monitor the intensity thresholds and avoid exceeding consumption according to the subscribed intensity.

TECHNICAL SPECIFICATIONS



CURRENT SENSOR 50A : LoRaWAN ARF8190BA-B01 | Sigfox ARF8191BA-B01
 CURRENT SENSOR 100A : LoRaWAN ARF8190BA-B02 | Sigfox ARF8191BA-B02

ANALOG

Mechanical specifications

Weight	70 g (battery included)
Dimensions	105 x 50 x 27 mm
Enclosure	IP67, EMERGE™ PC 8731HH grey resin (casing), EMERGE™ PC 8430-15 transparent resin (sole)
Mounting	DIN Rail, Tube, Wall, Collar

Operating conditions

Temperature	-25°C / +70°C
Humidity	0 to 85% RH (non-condensing)

Device Power Supply

Battery Type	Removable battery
Sensor supply management	Supplied by the phase observed
Expected Battery Life	For 1 frame every 2 hours (12 frames per day) : - Sigfox: 4.2 years - LoRaWAN SF12: 6.5 years / - LoRaWAN SF7: >10 years

Device configuration

Local device configuration	IoT Configurator
Remote device configuration	Downlink via the network or via the KARE platform and KARE platform

Radio/Wireless

Supported regions	LoRaWAN EU863-870 / Sigfox RC1
Wireless Security	AES-128 data encryption (LoRaWAN only)
Class	LoRaWAN: Class A Sigfox: Class 0
Supported LoRaWAN features	OTAA, ABP, ADR, adaptive channel setup
RF transmit power	14 dBm
Sensitivity	-136 dBm LoRaWAN @SF12 / -124 dBm Sigfox

Regulations and certifications

Standard	Directive 2014/53/UE (RED)
----------	----------------------------

CURRENT TRANSDUCER	50A	100A
Operating transducer	-25°C to +60°C	
Fire resistance	UL94-V0	
Nominal output	10 V DC	
Precision	+/-2%	
Communication	0-10 V	
Cable length	1 m	
Frequency of measured current	50 ~60 Hz	
Max input detection	75 A (max 1min)	150 A (max 1min)
Max sampling resistance	>10 kΩ	>7 kΩ
Max cable section	10 mm	16 mm
Size of the current probe	26 x 34 x 50 mm	33.5 x 38 x 55 mm

