

Water leak cable

IP67



Detecting a water leak on the ground, around an object or equipment.

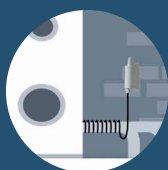


- Raise an alert in the event of the presence of water
- Warn of return to normal

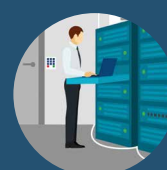
Additional features:



- **Data transmission:**
 - if water is detected
 - by default every 4 hours
- **Error/fault management:** product error warning, configuration error, low battery



Wrap the sensing cable around a water pipe in order to detect a possible leak.



Position the cable around sensitive elements or along baseboards to be warned of possible water damage.

TECHNICAL SPECIFICATIONS



Sigfox ARF8171BA-B03

DRY CONTACTS

Mechanical specifications

Weight	90g (battery included)
Dimensions	105 x 50 x 27mm
Enclosure	IP67, EMERGE™ PC 8731HH grey resin (casing), EMERGE™ PC 8430-15 transparent resin (sole)
Mounting	DIN Rail, Tube, Wall, Collar

Operating conditions

Temperature	-25°C / +70°C
Humidity	0 to 85% RH (non-condensing)

Device Power Supply

Battery Type	1 replaceable battery
Expected Battery Life	With standard configuration: 5.6 years

Device configuration

Local device configuration	IoT Configurator
Remote device configuration	Downlink via the network or via the KARE platform
Security	PIN/PUK Code protection

Radio/Wireless

Supported regions	RC1
Class	Class 0
RF transmit power	14 dBm (25 mW)
Sensitivity	-124 dB

Regulations and certifications

Standard	Directive 2014/53/UE (RED)
----------	----------------------------

WATER SENSOR

Cable Length	2 meters
Installation	Around an equipment, along a wall or rolled around a pipe
Detection	Capillary action
Liquid	Only Water (conductive liquid)

