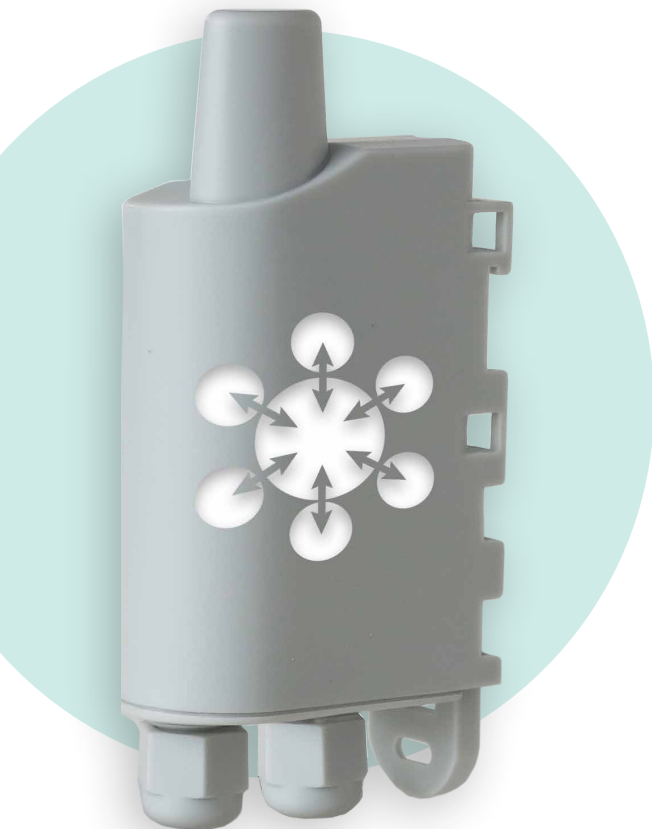


MODBUS

Query, write and read one or more registers
on one or more Modbus slaves.



ALERT

Report faults and alerts from
MODBUS slaves :

- Min/max thresholds



MEASURE

Provide feedback about measuring
data from Modbus slaves



ACT

- Read a slave's registers from
the network
- Write to a slave's registry from
the network



Additional features:

- Periodic transmission (up to 6 frames with different frequencies)
- Slave management: read and write
- Error/fault management: product error warning, configuration error
- Alarm repetition in case of persistent event
- Indicator lights for installation assistance



Make your thermal energy meters
communicate.



Broadcast information on PLC.

TECHNICAL SPECIFICATIONS



LoRaWAN US915 ARF8240BA | LoRaWAN AS923 ARF8240JA

Mechanical specifications

Weight	70 g
Dimensions	105 x 50 x 27 mm
Enclosure	IP67, EMERGE™ PC 8731HH grey resin (casing), EMERGE™ PC 8430-15 transparent resin (sole)
Fixations	DIN Rail, Tube, Wall, Collar
Cable length	2 cable of 6 wires (70 cm + 10 stripped wire)
Modbus Protocol	Remote Terminal Unit (RTU)

Operating conditions

Temperature	-25°C / +70°C
Humidity	0 to 85% RH (non-condensing)

Device Power Supply

Alimentation	External supply 6-30V continuous
Slave supply management	Monitor the supply of the slave
Current max returned to the sensor	500 mA

Device configuration

Local device configuration	IoT Configurator
Test Read and Write into slaves	Advanced mode of the IoT Configuration
Remote device configuration	Downlink through network and KARE platform
Security	PIN/PUK Code protection

Radio/Wireless

Supported regions	LoRaWAN US902-928 / LoRaWAN AS923
Wireless Security	AES-128 data encryption
LoRaWAN Class	Class A or C
Supported LoRaWAN features	OTAA, ABP, ADR, adaptive channel setup
RF transmit power	LoRaWAN US902-928: +18 dBm LoRaWAN AS923: +16 dBm
Sensitivity	-135 dBm LoRaWAN @SF12

Regulations and certifications

Standard	AUS/NZ: IEC 62368-1(safety) / AS/NZS 4268:2012 US: FCC- Title 47 CFR Part 15 CANADA: RSS-247 Issue 2
----------	--

RS232 Link

Signals	RX, TX, Ground (RTC and CTS are not handled)
Voltage of inputs/outputs	+/- 5V typ, +/- 15V max

RS485 Link

Signals	TX-, RX-, RX+; TX+, Ground
Voltages on inputs/outputs	+/- 1.5V typ, 3V differential
Polarization resistors	560 Ohms
Termination resistor	120 Ohms

